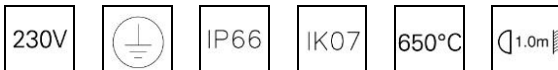
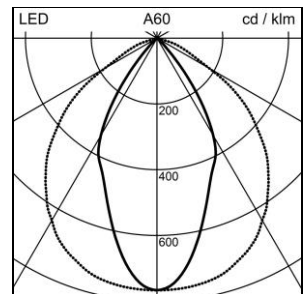
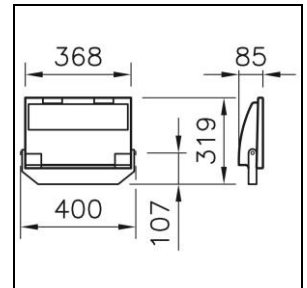


Datasheet

Guell 2 LED Floodlight

2001.2833



System power	105 W
Source of light	LED (Light Emitting Diode)
Colour temperature	4000 K
Luminaire flux	11863 lm
Ingress Protection	IP66
Colour Rendering Index	CRI >80
Economic life-time	L70 (B10) 130'000h
Light control	ON/OFF
Finish	metallic grey
Weight	0.6 kg

Floodlight Guell 2 LED with LED (Light Emitting Diode), system power: 105 W, luminous flux of luminaire 11863 lm, CRI >80, 4000 K, neutral white, SDCM 3, L70 (B10) 130'000h, 220-240V, 50-60 Hz, symmetric light emission, 1 integral control gear, ON/OFF, luminaire housing in die-cast aluminium, metallic grey, with cover screen in safety glass ESG, clear, with mounting bracket,

protection class I, ingress protection IP66, glow wire test 650 °C, impact strength: IK 07, B = 368 mm, T = 85 mm, total height = 319 mm