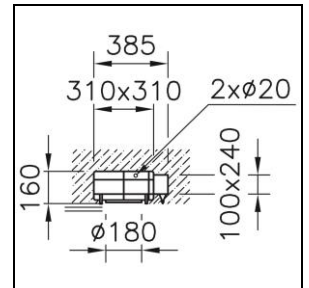
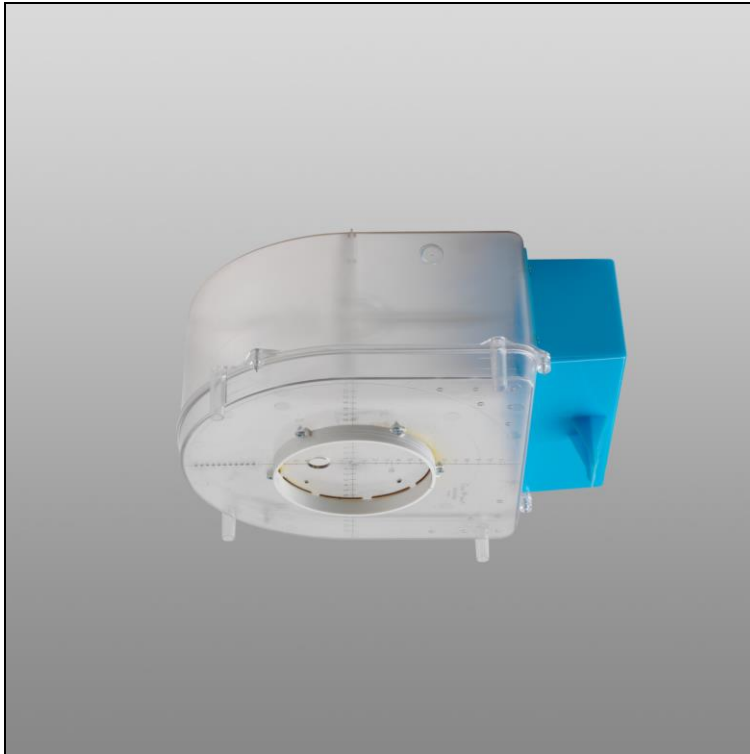


## Fiche technique

### B.Box Boîtier d'encastrement

1007.2861

EB073



**Poids**

0.053 kg

Boîtier d'encastrement B.Box pour béton brut, en polycarbonate (PC), sans halogène, rond, ø ouverture = 180 mm, EL = 385 mm, EB = 310 mm, ET = 160 mm